

Organizational and Personnel Changes

Sumitomo Mitsui DS Asset Management Company, Limited (President and CEO: Takashi Saruta) announces its organizational and personnel changes as follows.

1. Organizational Changes (Effective as of April 1, 2024)

- (1) Due to the change in the business in charge, Insurance Account Department II will be abolished, and Insurance Account Department I will be renamed "Insurance Account Department".
- (2) Asia Division will be abolished in order to promote the integrated operation of all our overseas offices.

* For details of the new organization, please refer to "New Organizational Structure" in Appendix 1.

2. Changes in Directors

(1) Directors scheduled to resign (Effective as of March 31, 2024)

Current position (Departments in Charge)	Name
Representative Director and Deputy President Executive Officer, Head of International Business Division (International Business Department, Sumitomo Mitsui DS Asset Management (UK) Limited, Sumitomo Mitsui DS Asset Management (USA) Inc.)	Takayuki Sawano
Director and Senior Managing Executive Officer, Head of Asia Division (Corporate Strategy Department, Sumitomo Mitsui DS Asset Management (Hong Kong) Limited, Sumitomo Mitsui DS Asset Management (Singapore) Pte. Ltd., Sumitomo Mitsui DS Private Fund Management (Shanghai) Co., Ltd.)	Kazuhisa Shimbo

(2) Newly appointed Directors (Effective as of April 1, 2024)

New position (Departments in Charge)	Current position (Departments in Charge)	Name
Representative Director and Deputy President Executive Officer	Executive Managing Director, Daiwa Securities Group Inc. Executive Managing Director, Member of the Board, Daiwa Securities Co. Ltd.	Shiko Yanagisawa
Director and Managing Executive Officer, Head of Risk Management Division (Risk Management Department, Legal & Compliance Department)	Executive Officer, Head of Risk Management Division (Risk Management Department, Legal & Compliance Department), General Manager of Risk Management Department	Tomonobu Matsui

3. Changes in Executive Officers

(1) Promoted Executive Officer (Effective as of April 1, 2024)

New position (Departments in Charge)	Current position (Departments in Charge)	Name
Senior Managing Executive Officer, Head of Products & Administration Division (Product Planning Department, Fund Accounting & Administration Department)	Managing Executive Officer, Head of Products & Administration Division (Product Planning Department, Investment Trust Documentation Department, Disclosure Department, Fund Accounting & Administration Department)	Osamu Ueyama

(2) Newly appointed Executive Officers (Effective as of April 1, 2024)

New position (Departments in Charge)	Current position	Name
Executive Officer (Product Management Department)	General Manager of Marketing Planning Department	Kenji Sonoda
Executive Officer (Investment Trust Documentation Department, Disclosure Department), General Manager of Investment Trust Documentation Department	General Manager of Investment Trust Documentation Department	Yuko Tsuchiya
Executive Officer (Asset Management Consulting Department), General Manager of Asset Management Consulting Department	General Manager of Asset Management Consulting Department	Yasuko Kito
Executive Officer, Head of International Business Division (International Business Department), General Manager of International Business Department	General Manager of International Business Department, Chief of International Business Department Client Relations Team, Chief of International Business Department Marketing Development Team	Yasuhiro Harada
Executive Officer, President, Sumitomo Mitsui DS Asset Management (UK) Limited	President, Sumitomo Mitsui DS Asset Management (UK) Limited	Daisuke Ishihara

(3) Changes in responsibilities of executive officers (Effective as of April 1, 2024)

New position (Departments in Charge)	Current position (Departments in Charge)	Name
Deputy President Executive Officer, Head of Investment Management Division (Responsible Investment Section)	Deputy President Executive Officer, Head of Investment Management Division (Investment Department (Supervision), Responsible Investment Section)	Wataru Ogihara
Managing Executive Officer (Investment Planning Department, Investment Department (Front Support), Insurance Account Department, Fund Management Department, Trading Department)	Managing Executive Officer (Investment Department (Equity), Insurance Account Department I, Insurance Account Department II), General Manager of Insurance Account Department II	Koichi Kinoshita
Executive Officer (Investment Department (Equity))	Executive Officer (Investment Department (Foreign Equity)) President, Sumitomo Mitsui DS Asset Management (Hong Kong) Limited	Naoto Nagai
Executive Officer (Investment Department (Fixed Income and Investment Development))	Executive Officer (Investment Department (Fixed Income and Investment Development), Trading Department (Fixed Income))	Koichiro Yoda
Executive Officer (Special Assignment in Products & Administration Division)	Executive Officer (Human Resources Department, Human Capital Development Department)	Naofumi Yamamoto
Senior Managing Executive Officer, Head of Sales & Marketing Division (Marketing Planning Department, Investment Solution & Marketing Department, Osaka Branch, Nagoya Branch)	Senior Managing Executive Officer, Head of Sales & Marketing Division (Investment Solution & Marketing Department, Asset Management Consulting Department, Osaka Branch, Nagoya Branch)	Ryohei Ajisaka
Executive Officer (Investment Solution & Marketing Department, Investment Trust Marketing Department I, Investment Trust Marketing Department II, Digital Marketing Department)	Executive Officer (Investment Trust Marketing Department I, Investment Trust Marketing Department II, Digital Marketing Department)	Tomonori Hori

February 29, 2024

Director and Senior Managing Executive Officer (Corporate Strategy Department, Corporate Sustainability Section, IT & Operation Management Department, Human Resources Department, Human Capital Development Department)	Director and Senior Managing Executive Officer (IT & Operation Management Department, Corporate Strategy Department, Corporate Sustainability Section)	Tsuyoshi Imai
Managing Executive Officer (Corporate Strategy Department, Corporate Sustainability Section)	Managing Executive Officer Deputy Head of Sales & Marketing Division (Marketing Planning Department)	Takenari Suzuki
Executive Officer (*1)	Executive Officer (Product Management Department)	Tsuyoshi Niijima

*1 Sumitomo Mitsui DS Asset Management (USA) Inc.

*2 For details on the responsibilities of all executive officers, please refer to "List of Executive Officers" on Appendix 2.

4. Changes in General Managers (Effective as of April 1, 2024)

New position	Current position	Name
General Manager of Investment Planning Department, General Manager of Investment Department	General Manager of Investment Planning Department	Kuniaki Matsuo
General Manager of Marketing Planning Department, General Manager of Marketing Planning Department Customer Experience Enhancement Section	Chief of Marketing Planning Department Marketing Planning Team	Tomonori Abe
General Manager of Investment Solution & Marketing Department	Chief of Investment Solution & Marketing Department Investor Service Team	Taku Takase
General Manager of Investment Trust Marketing Department I	General Manager of Investment Solution & Marketing Department	Kenji Umaoka
General Manager of Corporate Sustainability Section	General Manager of Marketing Planning Department Customer Experience Enhancement Section, Chief of Marketing Planning Department Business Development & Innovation Team	Takeru Inoue
General Manager of Risk Management Department, Chief of Risk Management Department Risk Management Team	Chief of Risk Management Department Risk Management Team	Osamu Nakamura
General Manager of Legal & Compliance Department	Corporate Strategy Department Corporate Strategy Team	Norihisa Mizushima
President, Sumitomo Mitsui DS Asset Management (Hong Kong) Limited	General Manager of Investment Department	Yuichi Awata
President, Sumitomo Mitsui DS Asset Management (Singapore) Pte. Ltd.	Sumitomo Mitsui DS Asset Management (Singapore) Pte. Ltd.	Akihiro Sato

Contact

Sumitomo Mitsui DS Asset Management Company, Limited

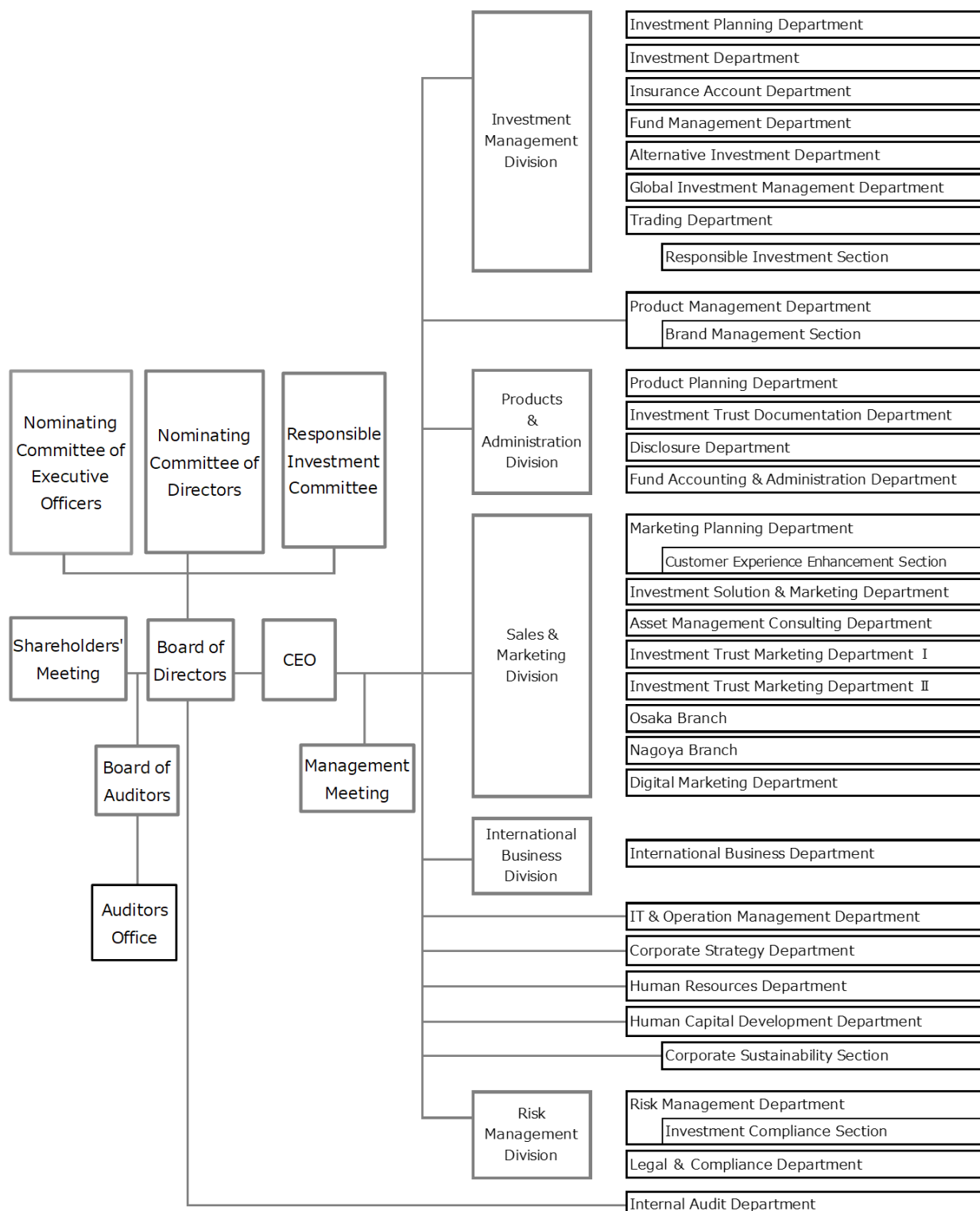
<https://www.smd-am.co.jp/english/>

Corporate Strategy Department

Akane Osumi akane_osumi@smd-am.co.jp

Nozu Murayama nozu_murayama@smd-am.co.jp

<Appendix 1> New Organizational Structure (As of April 1, 2024)



<Appendix 2> List of Executive Officers (As of April 1, 2024)

Name	New Position (Departments in Charge)
Takashi Saruta	Representative Director, President and CEO
Shiko Yanagisawa	Representative Director and Deputy President Executive Officer
Tsuyoshi Imai	Director and Senior Managing Executive Officer (Corporate Strategy Department, Corporate Sustainability Section, IT & Operation Management Department, Human Resources Department, Human Capital Development Department)
Tomonobu Matsui	Director and Managing Executive Officer Head of Risk Management Division (Risk Management Department, Legal & Compliance Department)
Tsuneto Iki	Deputy President Executive Officer (Alternative Investment Department, Global Investment Management Department, Product Management Department)
Wataru Ogihara	Deputy President Executive Officer Head of Investment Management Division (Responsible Investment Section)
Ryohei Ajsaka	Senior Managing Executive Officer Head of Sales & Marketing Division (Marketing Planning Department, Investment Solution & Marketing Department, Osaka Branch, Nagoya Branch)
Osamu Ueyama	Senior Managing Executive Officer Head of Products & Administration Division (Product Planning Department, Fund Accounting & Administration Department)
Koichi Kinoshita	Managing Executive Officer (Investment Planning Department, Investment Department (Front Support), Insurance Account Department, Fund Management Department, Trading Department)
Takenari Suzuki	Managing Executive Officer (Corporate Strategy Department, Corporate Sustainability Section)

(Continued on the next page)

February 29, 2024

Name	New Position (Departments in Charge)
Tsuyoshi Niijima	Executive Officer
Naofumi Yamamoto	Executive Officer (Special Assignment in Products & Administration Division)
Naoto Nagai	Executive Officer (Investment Department (Equity))
Koichiro Yoda	Executive Officer (Investment Department (Fixed Income and Investment Development))
Tomonori Hori	Executive Officer (Investment Solution & Marketing Department, Investment Trust Marketing Department I , Investment Trust Marketing Department II , Digital Marketing Department)
Kenji Sonoda	Executive Officer (Product Management Department)
Yasuko Kito	Executive Officer (Asset Management Consulting Department)
Daisuke Ishihara	Executive Officer
Yasuhiro Harada	Executive Officer Head of International Business Division (International Business Department)
Yuko Tsuchiya	Executive Officer (Investment Trust Documentation Department, Disclosure Department)